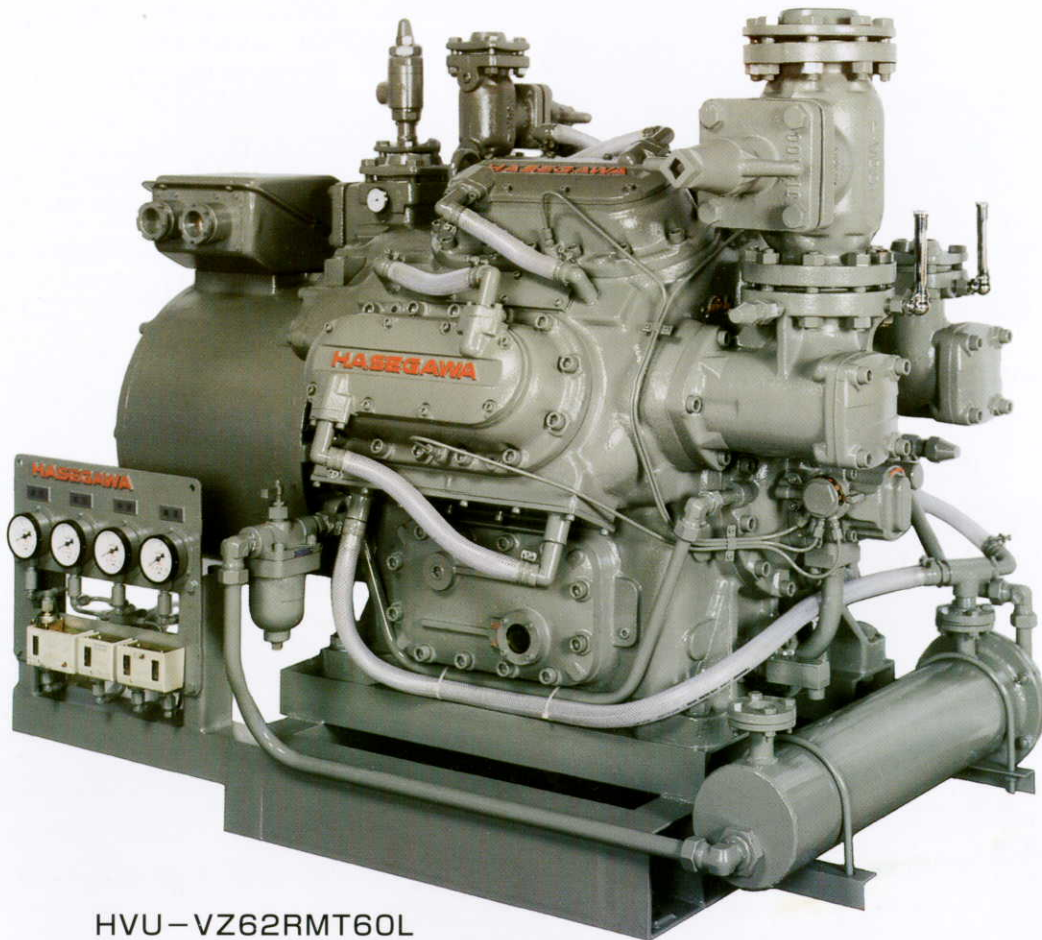


**HVU** SERIES

# COMPRESSOR UNIT

HASEGAWA'S Refrigeration compressors have achieved worldwide recognition for their Quality, Reliability and Efficiency.

- ◆ Low energy consumption.
- ◆ Low noise level due to highly efficient design.
- ◆ Flanged motor type of high space-performance.
- ◆ Canned motor of perfect leak-proof.



HVU-VZ62RMT60L

OPTION : Belt Driven Design Available

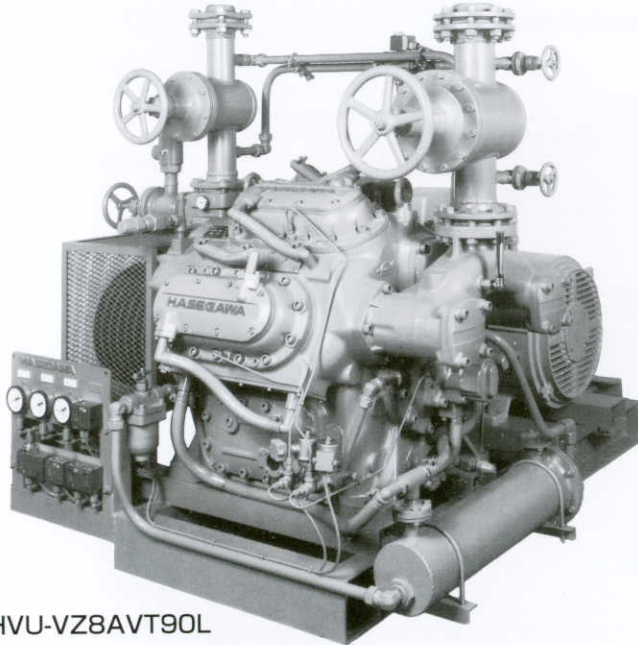
All HASEGAWA compressors are available for R717(Ammonia) and R22(HCFC22).  
HASEGAWA is a worldwide leader in the refrigeration industry.

# HASEGAWA

HVU series /

# Model VZ·VZL COMPRESSOR UNIT

**NEW DESIGN CONCEPT FROM ECOLOGICAL MIND**  
DEEP FREEZING MACHINE: BEST BALANCE OF BORE x STROKE



HVU-VZ8AVT90L

**REFRIGERANT AVAILABILITY:**  
HIGHEST PERFORMANCE WITH BOTH AMMONIA AND HCFC22

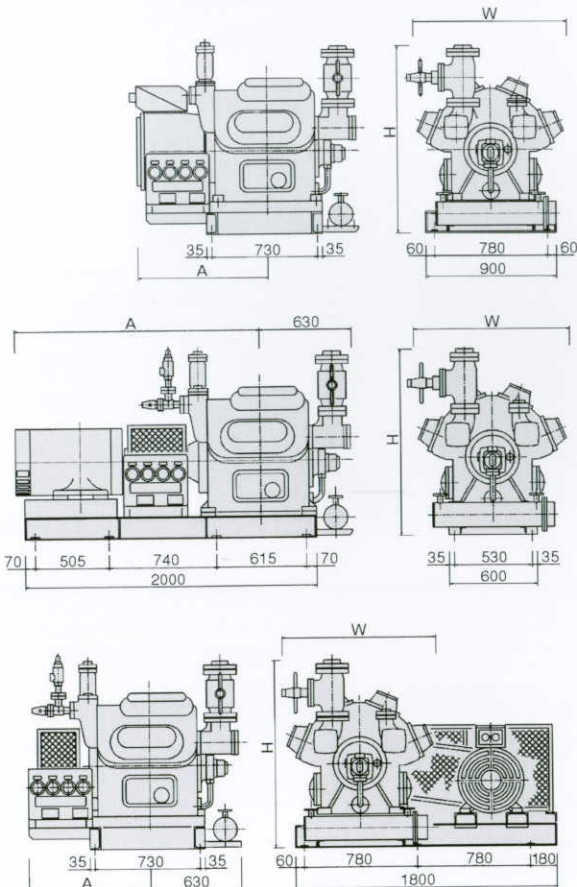
**ENERGY SAVING:**  
HIGH SPEED, HIGH EFFICIENCY  
HIGH PERFORMANCE FROM SIMPLE MACHINE

**LOW NOISE:**  
MULTI-CYLINDER IN SIMPLE BODY  
LOW NOISE, LESS VIBRATION

**MOTOR AVAILABILITY:**  
FLANGED MOTOR  
CANNED MOTOR

HASEGAWA'S advanced sealing technology eased to get new possibilities: Flanged type motor is available not only for HCFC22 but also for AMMONIA.

Newly developed canned motor is suitable for critical elimination of AMMONIA leakage.



**FLANGED MOTOR DRIVE**

	A	W	H
VZ6	990	1020	1600
VZ8	990	1060	1600
VZL8	990	1060	1600
VZ42	900	1020	1400
VZ62	990	1060	1500
VZL62	990	1060	1500

**DIRECT COUPLING DRIVE**

	A	W	H
VZ6	1655	1020	1550
VZ8	1655	1060	1550
VZL8	1655	1060	1550
VZ42	1655	1020	1350
VZ62	1655	1060	1450
VZL62	1655	1060	1450

**V-BELT DRIVE**

	A	W	H
VZ6	840	1020	1600
VZ8	840	1060	1600
VZL8	840	1060	1600
VZ42	840	1020	1400
VZ62	840	1060	1500
VZL62	840	1060	1500

(Size A has some change by motor kW)

## MODEL VZ·VZL COMPRESSOR SPECIFICATIONS

## ◆ FLANGED MOTOR COMPRESSOR

Compressor Unit Model	Single-stage compressor			Two-stage compressor		
	R717 (AMMONIA)	HVU— VZ6AMT	HVU— VZ8AMT	HVU— VZL8AMT	HVU— VZ42AMT	HVU— VZ62AMT
R22 (HCFC22)	HVU— VZ6RMT	HVU— VZ8RMT	HVU— VZL8RMT	HVU— VZ42RMT	HVU— VZ62RMT	HVU— VZL62RMT

## ◆ DIRECT COUPLING COMPRESSOR

Compressor Unit Model	Single-stage compressor			Two-stage compressor		
	R717 (AMMONIA)	HVU— VZ6ADT	HVU— VZ8ADT	HVU— VZL8ADT	HVU— VZ42ADT	HVU— VZ62ADT
R22 (HCFC22)	HVU— VZ6RDT	HVU— VZ8RDT	HVU— VZL8RDT	HVU— VZ42RDT	HVU— VZ62RDT	HVU— VZL62RDT

## ◆ V-BELT DRIVE COMPRESSOR

Compressor Unit Model	Single-stage compressor			Two-stage compressor		
	R717 (AMMONIA)	HVU— VZ6AVT	HVU— VZ8AVT	HVU— VZL8AVT	HVU— VZ42AVT	HVU— VZ62AVT
R22 (HCFC22)	HVU— VZ6RVT	HVU— VZ8RVT	HVU— VZL8RVT	HVU— VZ42RVT	HVU— VZ62RVT	HVU— VZL62RVT

Model, Compressor	VZ6	VZ8	VZL8	VZ42	VZ62	VZL62	
No. Cylinder	6	8	8	4+2	6+2	6+2	
Capacity Step Control (cylinders), (Low Pressure Side)	6-4-2	8-6-4	8-6-4	4-2	6-4-2	6-4-2	
Cylinder bore (mm)	132	132	132	132	132	132	
Piston stroke (mm)	106	106	132	106	106	132	
Speed (rpm)	980/1170	980/1170	980/1170	980/1170	980/1170	980/1170	
Displacement (m <sup>3</sup> /hr)	511.77/610.99	682.36/814.65	849.73/1014.47	511.77/610.99	682.36/814.65	849.73/1014.47	
Ref. capacity (kW)	R717	216.98/259.07	289.30/345.35	360.23/430.12	79.53/95.70	110.70/132.21	137.91/164.65
	R22	205.81/245.70	274.42/327.67	341.74/408.02	87.09/103.95	117.44/140.23	146.28/174.65
Connections (mm)	Suction	114.3	114.3	114.3	89.1	114.3	114.3
	Middle Press	—	—	—	60.5, 60.5	76.3, 76.3	76.3, 76.3
	Discharge	76.3	89.1	89.1	48.6	60.5	60.5
Initial charge, oil (ℓ)	30	32	32	30	32	32	

Ref. capacity at Condensing temperature +40°C. Evaporative temperature -15°C (Single-stage compressor)

Ref. capacity at Condensing temperature +40°C. Evaporative temperature -35°C (Two-stage compressor)

## ■ MODEL DESCRIPTION:

[FOR EXAMPLE] HVU- VZ 62 A M T 75 L

HVU series/ Model, Compressor Unit						Aux. marks	
HVU—	VZ	62	A	M	T	75	L
Series	Model, Compressor	Refrigerant	Drive	Pole	Motor, kW	for Using	
HVU—	VZ	6, 42	A=R717	M=Flanged Motor	T=6P	45, 55, 60, 75, 90,	L=Land
	VZL	8, 62	R=R22	D=Direct Coupling		110, 115, 130,	M=Marine
			V=V- Belt			132, 140, 150, 160	

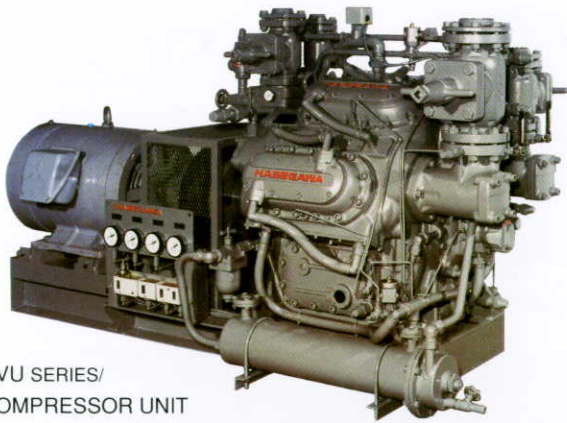
## ■ STANDARD ACCESSORIES:

Oil Cooler, Gauge Board, Solenoid Valve for Starting Up, Crankcase Heater (HCFC22), Thermometers

## ■ OPTION:

Vibration Proof Device (Pads & Flexible Tubes)

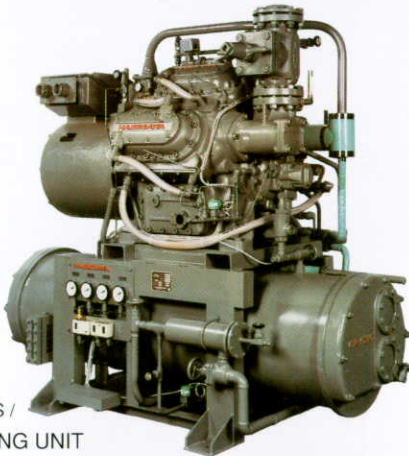
★ MODEL VZ·VZL



HVU SERIES /  
COMPRESSOR UNIT



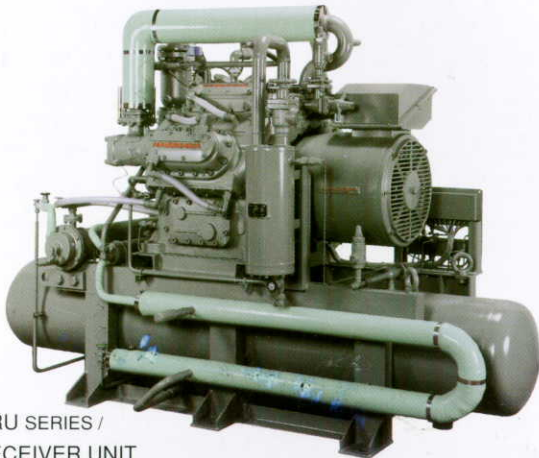
HVU SERIES /  
COMPRESSOR UNIT



HCU SERIES /  
CONDENSING UNIT



HCU SERIES /  
CONDENSING UNIT



HRU SERIES /  
RECEIVER UNIT



HEU SERIES /  
ENGINE DRIVE COMPRESSOR UNIT

**HASEGAWA**  
REFRIGERATION, LTD.

Head Office 4-39, Namiyoke 1-chome, Minato-ku, Osaka 552-0001, Japan  
Tel. 81-6-6583-1381 Fax. 81-6-6583-1389  
E-mail: osk@hasegawa-jpn.com

Tokyo Office 905, Marunouchi Bldg., 4-1, Marunouchi 2-Chome, Chiyoda-ku Tokyo 100-6309, Jpn  
Tel. 81-3-3212-3995 Fax. 81-3-3212-3996  
E-mail: tky@hasegawa-jpn.com

Sapporo Office Hokkaido Suisan Bldg., Nishi 7-Chome, Kita 3-jo, Chuo-ku, Sapporo 060-0003, Japan  
Tel. 81-11-241-7678 Fax. 81-11-261-3902

US Office 11809 Starcrest Drive, San Antonio, TX 78247 U.S.A.  
Tel. 1-210-494-7673 Fax. 1-210-494-9680  
E-mail: hsurely@swbell.net



**Husmann Tempcool (Singapore) Pte Ltd**  
121 Genting Lane  
Singapore 349572  
Tel : ( 65 ) 6745 9911 / 6746 2867  
Fax : ( 65 ) 6743 0206 / 6743 7181